



# myPDFmanuals

You can read the recommendations in the user guide, the technical guide or the installation guide for EMERSON EWW404. You'll find the answers to all your questions on the EMERSON EWW404 in the user manual (information, specifications, safety advice, size, accessories, etc.). Detailed instructions for use are in the User's Guide.

## User manual EMERSON EWW404 User guide EMERSON EWW404 Operating instructions EMERSON EWW404 Instructions for use EMERSON EWW404 Instruction manual EMERSON EWW404



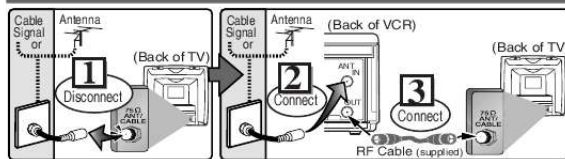
EMERSON AND THE G-CLEF LOGO ARE REGISTERED TRADEMARKS OF EMERSON RADIO CORP., PARSIPPANY, NEW JERSEY, U.S.A.

### Owner's Manual Video Cassette Recorder EWW404 VHS

If you need additional operating assistance after reading this owner's manual or to order replacement accessories, please call  
**TOLL FREE : 1-800-256-2487**  
or visit our web site at <http://www.funai-corp.com>

## 1. Before using your VCR

### Basic VCR/TV Connection



4 Plug the AC power cords of the VCR and TV into the AC outlets.

### Hint for Cable Box or Satellite Box



Select this connection when you want to view or record a scrambled channel. With this connection, channels cannot be changed on the VCR. You can view or record ONLY the channels you have selected on the cable box or the satellite box.

• While you are recording, only the recorded channel can be viewed.

#### To select channels of the cable box or satellite box

1) Turn on the VCR by pressing the POWER button, and then, press the VCR/TV button. The POWER and the VCR/TV indicators on the front panel will light on. Then, press the CHANNEL buttons to select channel 3 or 4 (the same channel as the output channel of the cable box or satellite box).

• If you use the channel 4, you need to change the VCR's RF output to channel 4. Refer to "RF Output Channel".

2) At the TV, select channel 3 or 4 (the same channel as you have selected at step 1).

3) At the cable box or satellite box, select the channel you want to view or record.

Select this connection when you want to change channels on the VCR. With this connection, you may watch one channel while recording another.

• You may not view or record a scrambled channel.

#### To select channels of the cable box or satellite box

1) At the cable box or satellite box, select channel 3 or 4 (the same channel as the VCR's RF output channel.)

• Refer to "RF Output Channel".

2) At the TV, select the same channel as the output channel (3 or 4) of the cable box or satellite box.

3) Turn on the VCR by pressing the POWER button, and then, press the VCR/TV button. The POWER and VCR/TV indicators on the front panel will light on. Then, select the channel you want to view or record.

#### To play back a tape

Follow the steps 1) to 2) above. Then, play back a tape.

• Refer to "Playback" on page 5.

#### To view one channel while recording another

1) While you are recording on the VCR, press the VCR/TV button so that the VCR/TV indicator disappears on the VCR.

2) At the cable box or satellite box, select the channel you want to view.

### RF Output Channel

If channel 3 is already occupied for broadcasting,

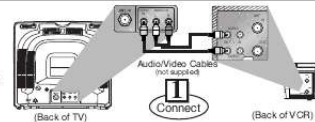
- 1) Set your TV to channel 4.
- 2) Insert a pre-recorded tape into the VCR.
- 3) Press the PLAY button once.
- 4) After a few seconds, press the PLAY button on the VCR for 3 seconds.
- The RF output channel will change to channel 4 from channel 3 and you will see a playback picture.
- When a picture does not appear on the TV screen, repeat step [4].
- 5) Press the STOP button to stop playback.

### Hint

• The RF output channel may not change when you adjust tracking during playback. In this case, stop the playback, and start the playback again. After that, press the PLAY button on the VCR for 3 seconds again.

### Stereo TV Connection

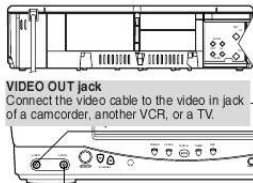
You can use the AUDIO OUT jack and VIDEO OUT jack on the back of the VCR if your TV has Audio/Video Input jacks. In this case, you need to set the TV to external Line Input Mode. Please refer to your TV's owner's manual.



### Front & Rear Terminals

**AUDIO OUT jack**  
Connect the audio cable to the audio in jack of a camcorder, another VCR, a stereo amplifier, or an audio system.

**AUDIO IN jack**  
Connect the audio cable from the audio out jack of a camcorder, another VCR, or an audio source.



**ANT IN jack**  
Connect your antenna or cable box.

**ANT OUT jack**  
Connect the RF cable (supplied) to the antenna input jack on your TV.

**VIDEO OUT jack**  
Connect the video cable to the video in jack of a camcorder, another VCR, or a TV.

**VIDEO IN jack**  
Connect the video cable from the video out jack of a camcorder, another VCR, or an audio-visual source (laser disc player, video disc player, etc.).

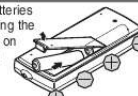
### Supplied Accessory

- Remote control (NA372UD) with Two AA batteries
- RF Cable (WPZ0901TM002)
- Owner's Manual (0VMN04033)



### Installing the Batteries for the Remote Control

Install two AA batteries (supplied) matching the polarity indicated on the bottom of the remote control.



Printed in China  
0VMN04033 / HF331UD \*\*\*\*\*



[Your user manual](#)  
[EMERSON EWW404](#)

**Manual abstract:**

The POWER and VCR/TV indicators on the front panel will light on. Then, select the channel you want to view or record. To play back a tape Follow the steps 1) to 2) above. Then, play back a tape. · Refer to "Playback" on page 5. To view one channel while recording another 1)While you are recording on the VCR, press the VCR/TV button so that the VCR/TV indicator disappears on the VCR. 2)At the cable box or satellite box, select the channel you want to view.

VIDEO OUT jack Connect the video cable to the video in jack of a camcorder, another VCR, or a TV. POWER VCR/TV TAPE IN TIMER REC VIDEO AUDIO POWER CHANNEL MENU VIDEO IN jack Connect the video cable from the video out jack of a camcorder, another VCR, or an audio-visual source (laser disc player, video disc player, etc.).

Supplied Accessory · Remote control (NA372UD) with Two AA batteries · RF Cable · Owner's Manual (WPZ0901TM002) (0VMN04033) Installing the Batteries for the Remote Control Install two AA batteries (supplied) matching the polarity indicated on the bottom of the remote control. 1- Printed in China 0VMN04033 / HF331UD 2. Important Safeguards WARNING: TO REDUCE THE RISK OF FIRE OR ELECTRIC SHOCK, DO NOT EXPOSE THIS APPLIANCE TO RAIN OR MOISTURE. CAUTION: TO REDUCE THE RISK OF ELECTRIC SHOCK, DO NOT REMOVE COVER (OR BACK). NO USER SERVICEABLE PARTS INSIDE.

REFER SERVICING TO QUALIFIED SERVICE PERSONNEL. The caution marking is located on the rear of the cabinet. RISK OF ELECTRIC SHOCK DO NOT OPEN CAUTION The lightning flash with arrowhead symbol, within an equilateral triangle, is intended to alert the user to the presence of uninsulated "dangerous voltage" within the product's enclosure that may be of sufficient magnitude to constitute a risk of electric shock to persons. The exclamation point within an equilateral triangle is intended to alert the user to the presence of important operating and maintenance (servicing) instructions in the literature accompanying the product. 1.

Read Instructions- All the safety and operating instructions should be read before the appliance is operated. 2. Retain Instructions- The safety and operating instructions should be retained for future reference. 3. Heed Warnings- All warnings on the appliance and in the operating instructions should be adhered to. 4. Follow Instructions- All operating and use instructions should be followed. 5. Cleaning- Unplug this video product from the wall outlet before cleaning. Do not use liquid cleaners or aerosol cleaners.

Use a damp cloth for cleaning. EXCEPTION: A product that is meant for uninterrupted service and, that for some specific reason, such as the possibility of the loss of an authorization code for a CATV converter, is not intended to be unplugged by the user for cleaning or any other purpose, may exclude the reference to unplugging the appliance in the cleaning description otherwise required in item 5. 6. Attachments- Do not use attachments not recommended by the video product manufacturer as they may cause hazards. 7. Water and Moisture- Do not use this video product near water, for example, near a bath tub, wash bowl, kitchen sink, or laundry tub, in a wet basement, or near a swimming pool, and the like. 8. Accessories- Do not place this video product on an unstable cart, stand, tripod, bracket, or table. The video product may fall, causing serious injury to a child or adult, and serious damage to the appliance. Use only with a cart, stand, tripod, bracket, or table recommended by the manufacturer, or sold with the video product.

Any mounting of the appliance should follow the manufacturer's instructions and should use a mounting accessory recommended by the manufacturer. An appliance and cart combination should be moved with care. Quick stops, excessive force, and uneven surfaces may cause the appliance and cart combination to overturn. 9. Ventilation- Slots and openings in the cabinet are provided for ventilation and to ensure reliable operation of the video product and to protect it from overheating, and these openings must not be blocked or covered.

The openings should never be blocked by placing the video product on a bed, sofa, rug, or other similar surface..



[Your user manual](#)  
[EMERSON EWV404](#)